

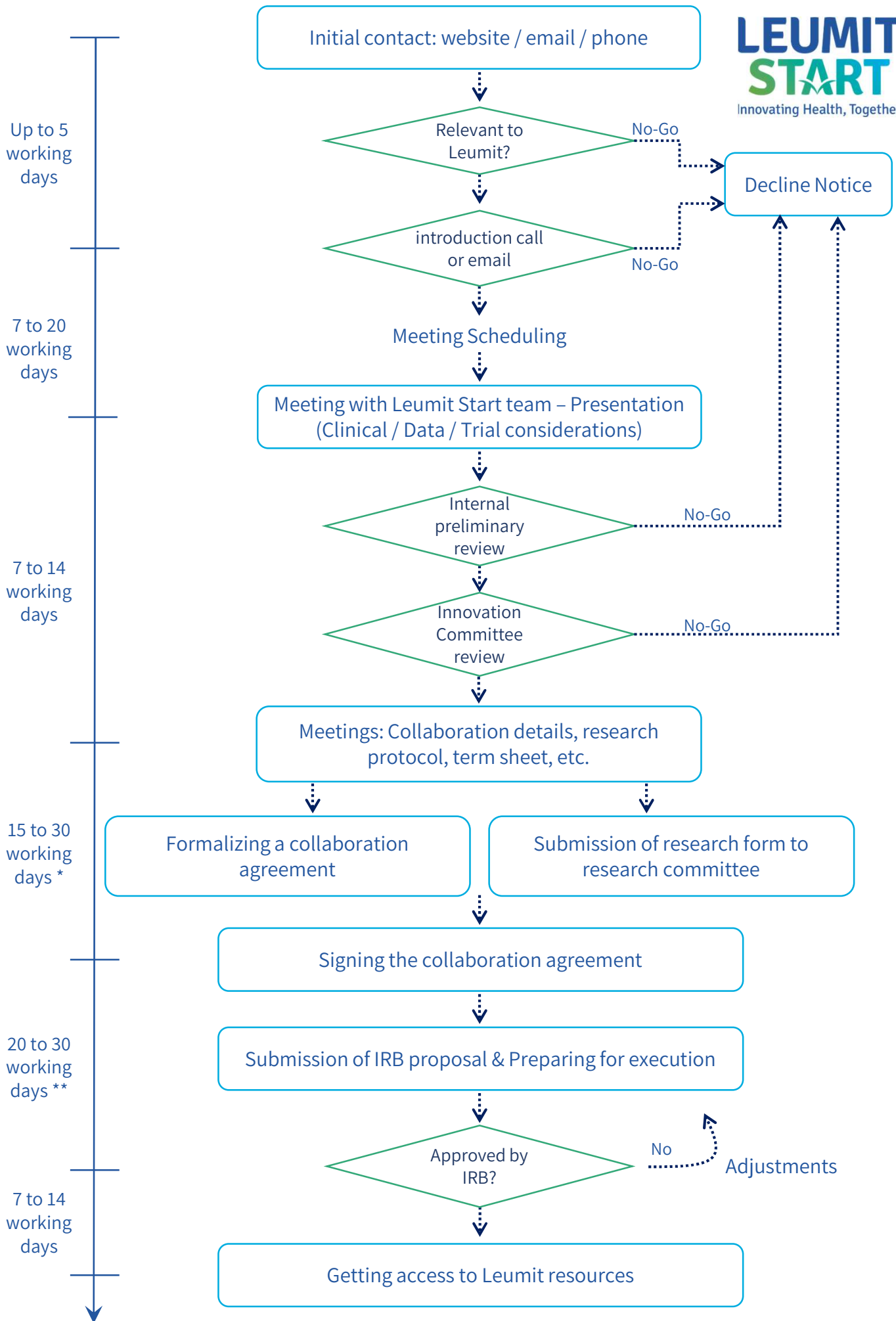


## How to start collaborating with us

In this document you'll find a flowchart that describes the process of contracting with us, including estimated timeframes we're committed to.

You will also find a list of services we can provide for R&D collaborations, including an order of magnitude of the costs.

Best regards,  
Leumit Start.



\*Subject to both sides' legal consultancy & number of iterations    \*\* Depending on complexity

## Costs and Services – Leumit Start

Retrospective Data Research	Prospective Interventional Research
<p><u>Services:</u></p> <ul style="list-style-type: none"> <li>• IRB submission</li> <li>• Principal Investigator</li> <li>• Data extraction from the EMR</li> <li>• Data access using virtual lab room</li> <li>• Project Management</li> </ul> <p><u>Optional services:</u></p> <ul style="list-style-type: none"> <li>• Clinical consulting</li> <li>• Design partner consulting</li> </ul>	<p><u>Services:</u></p> <ul style="list-style-type: none"> <li>• IRB submission</li> <li>• Principal Investigator</li> <li>• Data extraction from the EMR</li> <li>• Data access using virtual lab room</li> <li>• Research planning</li> <li>• Project Management</li> <li>• Research staff members (clinicians, assistants etc.)</li> <li>• Research subject's recruitment and research facilities</li> </ul> <p><u>Optional services:</u></p> <ul style="list-style-type: none"> <li>• Clinical consulting</li> <li>• Design partner consulting</li> </ul>
<p><b>Two business proposals*</b></p> <p><u>One step deal:</u> a lump sum containing research expenses coverage + additional one-time payment</p> <p><u>Two step deal:</u></p> <ol style="list-style-type: none"> <li>1 - Coverage of initial research expenses starting at tens of thousands NIS</li> <li>2 - future payment based on revenue share or equivalent method</li> </ol>	<p><b>Two business proposals*</b></p> <p><u>One step deal:</u> a lump sum containing research expenses coverage + additional one-time payment</p> <p><u>Two step deal:</u></p> <ol style="list-style-type: none"> <li>1 - Coverage of initial research expenses starting at approximately 100,000 NIS</li> <li>2 - future payment based on revenue share or equivalent method</li> </ol>

*\* Final costs are subject to research complexity, resources and volume.*

*Payment schedule is in accordance with milestones compliance.*